

ProTims

Terminal Information Management System

PAX ProTims is a complete terminal information management system that significantly reduces costs and can be used to deploy new revenue generating payment applications.

Applications and parameters can be securely downloaded to any PAX POS terminal, located anywhere, with scalability to very large installations. Interrupted downloads can be easily resumed from the last point of failure. In addition, the POS transaction module remotely captures download transaction history and stores the data in a flexible and easy to use centralized database. The POS auto update module automates the delivery system updates during off-peak hours, minimizing the impact to your business, and the remote diagnostic utility identifies and resolves terminal

Key Features

Supports terminal remote deployment and first-time installation: EDC terminal application remote download within 2 minutes.

Supports terminal applications remote upgrade and terminal parameters download. Supports unlimited concurrent terminal downloads. (The number of concurrent terminal downloads can be limited due to networking equipment that terminal are connected to).

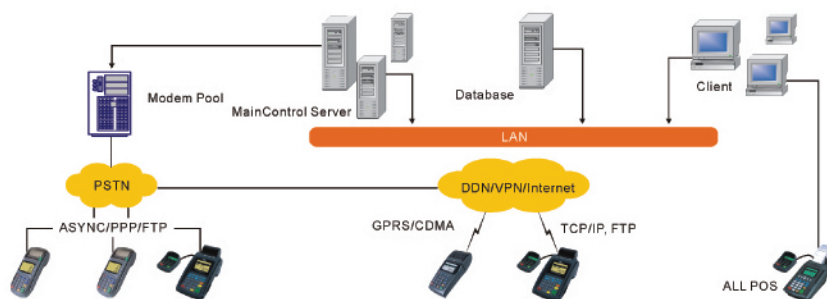
Support bidirectional short message communications between terminal and host; host can broadcast short messages to a predefined merchant group. Merchants can send short messages to backend host to order services.

Remote diagnostics through data analysis collected from terminal logs.

ProTims offers POS service providers complete information on asset management.

Supports multi branch management via web based interface.

Provides flexible statistic reports for analysis and service improvement.



System Architecture



ProTims

Terminal Information Management System

Module Description

Software Distribution Module

- Unlimited concurrent downloads
- Multi-application single download
- Categorized merchant management
- Real-time download supervision
- Predefined download plan

Parameter Management Module

- FIT parameters
- Issuer parameters (issuer name, transaction control setting, etc.)
- Acquirer parameters (acquirer name, TID, MID)
- Terminal parameters
- EMV related parameters (AIDs, public key, etc)
- Merchant information

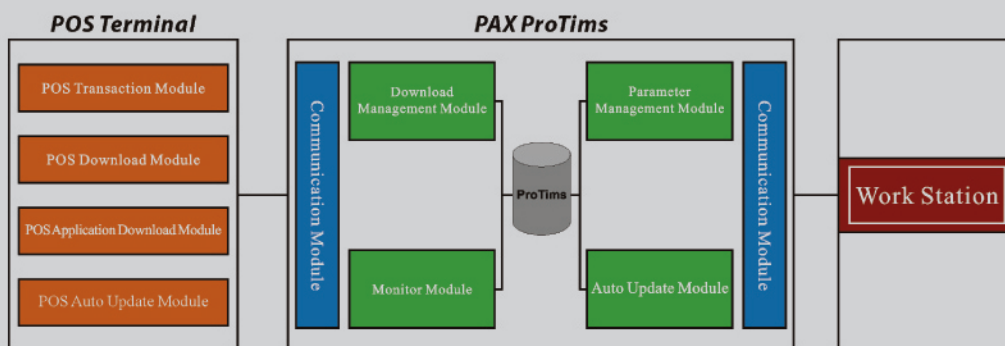
Operation Control Module

- System-defined various roles and different roles can visit predefined function modules.
- Every operator has to fill in username and password to log on, so the system can ensure data is secure and reliable.

Reporting Module

- Merchant statistic reports
- Terminal installation reports
- Terminal information statistic reports
- System information statistic reports
- Other predefined reports

Module Diagram



www.pax.com.cn

Corporate Headquarters

4/F, No.3 Building, Software Park,
2nd Central Science-Tech Road,
High-Tech Industrial Park,
Shenzhen 518057,
P.R. C.
T: +86 755 8616 9630
F: +86 755 8616 9634
E: market@paxsz.com

North American Branch

560 Broad Hollow Road,
Suite 100 Melville,
New York 11747,
USA
T: +1 631 2479 660
F: +1 631 7509 122

Asia Pacific Office

Room 2416, 24/F.,
Sun Hung Kai Centre,
30 Harbour Road, Wanchai,
Hong Kong
T: +852 2500 8500
F: +852 2598 0299

THIS DOCUMENT IS PROVIDED TO YOU FOR INFORMATIONAL PURPOSES ONLY. All features and specifications are subject to change without notice.

PAX are either trademarks or registered trademarks of PAX Technology Co. Ltd. in China and/or other countries. All other trademarks or brand names are the properties of their respective holders.

Copyright 2011, PAX Technology Co., Ltd., All Rights Reserved.